



E-Tech Technology (Shenzhen) Ltd

Tel:86-755-8364 6618
Fax:86-755-8364 6518
Web:www.e-techwater.com
Email: sales@e-techwater.com

Create Smart Lives



E-Tech Technology (Shenzhen) Limited established in 2004, formerly by the name of E-Tech Heat Pumps (Shenzhen) Limited, which originated from Hong Kong, the leading and diversifying supplier of heat pumps, DC 24V submersible pumps, water treatment products and interactive water features products.

With more than three decades of experience and hard-working, we have achieved not only innovative concepts in design, but also unique products in manufacture. So far, we have obtained several national patents, international PCTs, national computer software copyrights and other qualifications. As a market leader, E-Tech was entrusted by the "Ministry of Housing and Urban-Rural Development of the People's Republic of China" to be responsible for editor-in-chief of the industry standard "Swimming Pool Damp-Removal Heat Recovery Heat Pump". In 2018, E-Tech became a national high-tech enterprise officially.

As one of the leaders of the water technology product in China, by our full experiences in product application, our water products are well spread throughout China, north to Manzhouli & south to Sanya, west to Xinjiang & east to Taiwan. We have provided services for well-known hotels and developers, such as Marriott, Hilton, Shangri-La, Wanda, Poly, Greenland, OCT, Country Garden, Evergrande etc. In order to keep our lead in technology, we frequently invite overseas professionals in water fields to communicate the new technology as a strategic plan. Our branches in Beijing, Shanghai, Chengdu, and Xiamen provide excellent professional technology support in time.

"Focusing on water, growing on water", E-Tech will always concentrate on the research and development of diversified water technology products, to provide the market with more water-oriented energy saving and interactive products.



Patent for Invention

Submersible pump system and submersible pump (Serial Number: ZL 2016 8 0007600.8)

The equipment and method of interaction minesweeping game (Serial Number: ZL 2016 8 0007530.6)

A system and method of bubble tracking, recognition and shooting (Serial Number: ZL 2016 8 000 7596.5)

Patent for Utility Models

Submersible pump (Serial Number: ZL 2019 2 0096975.7)

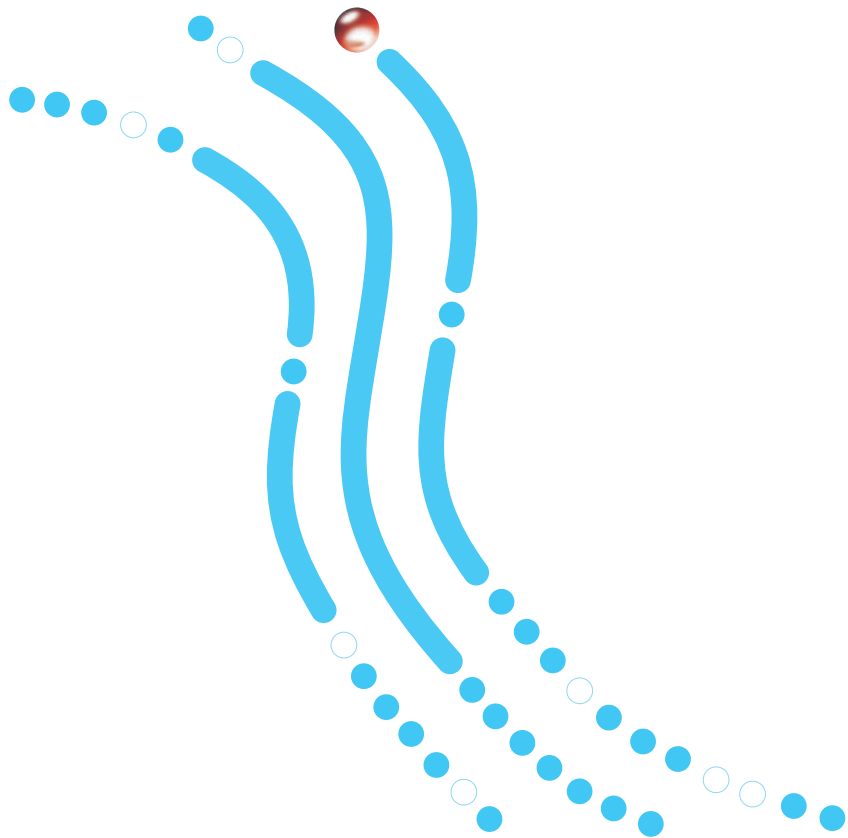
A safe integration flow filter device (Serial Number: ZL 2017 2 1172129.6)

A new type of digital water curtain with interaction and entertainment function (Serial Number: ZL 2016 2 0440993.9)

Design Patent

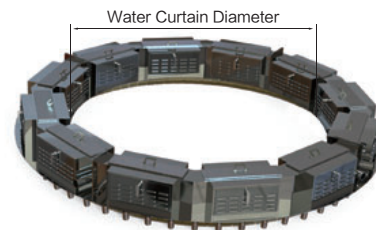
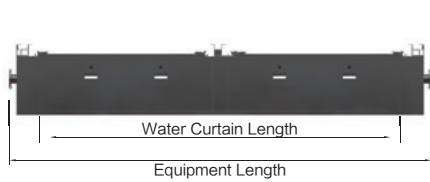
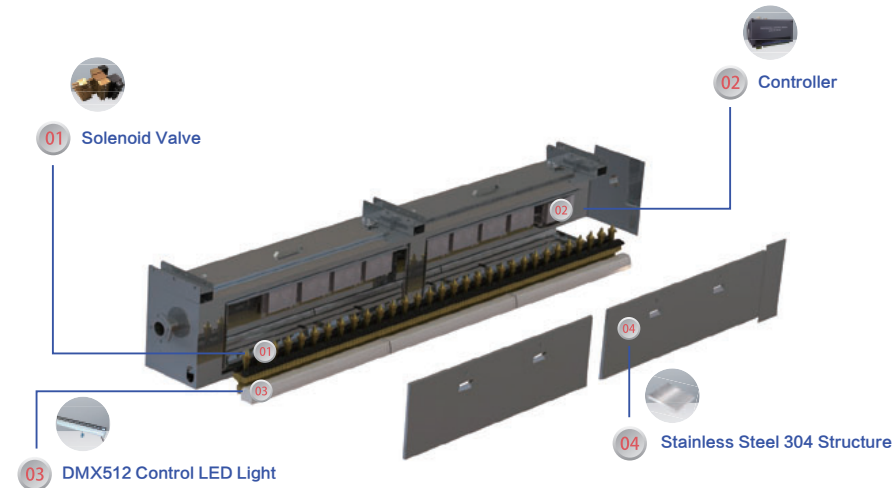
Waterfall swing (Serial Number: ZL 2018 3 0708656.8)

Digital Water Curtain



Product Introduction

Digital Water Curtain is an interactive landscape product which forms any text and pattern by water. It can be applied in Plazas, hotels and other places. By adjusting water length of each nozzle to achieve the need of computer computing, the computer program controls solenoid valve opening and closing time. According to this principle, different lengths of water can form the required graphics and texts at the moment when the water leaves the nozzle. Simultaneously, the LED lights of the water curtain also presents various colors and brightness required by the computer program, making the text and graphics displayed colorful.



1. On-Demand System

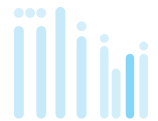
The user enters the program through the WeChat Official Account of E-Tech Technology, then selects the music in the song store and enters the text, the on-demand system would arrange the corresponding water graphics according to the melody of the song.

Scan code to watch video



2. Graffiti

The user draws a graphic by hand on the touch screen, and the water curtain system will present the corresponding hand-drawn water graphics in real time when it performs.





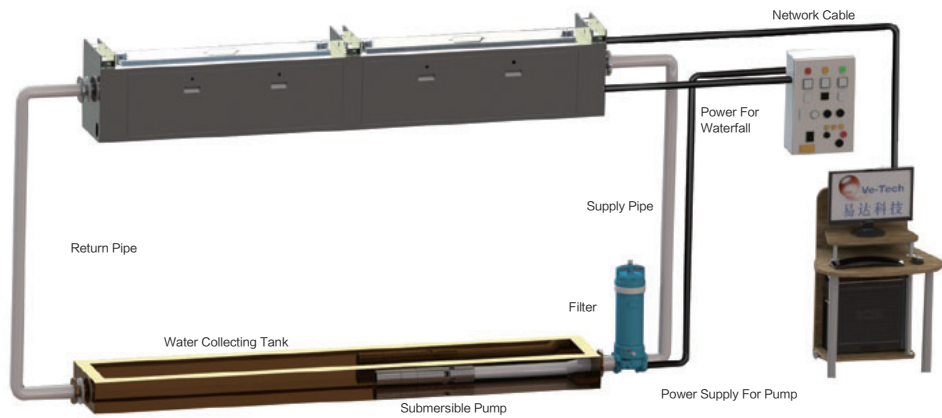
Digital Water Curtain

Linear Digital Water Curtain

	Parameters \ Model	Model								
		VeSL-1-1000	VeSL-1-2000	VeSL-1-3000	VeSL-1-4000	VeSL-1-5000	VeSL-1-6000	VeSL-1-7000	VeSL-1-8000	VeSL-1-9000
Series S	Flow (m ³ /hr)	2.4	4.8	7.2	9.6	12	14.4	16.8	19.2	21.6
	Power (kW)	0.69	1.38	2.07	2.76	3.45	4.14	4.83	5.52	6.21
	Solenoid Valves(Pcs)	40	80	120	160	200	240	280	320	360
	Nozzles(Pcs)	80	160	240	320	400	480	560	640	720
	Water Curtain Length(mm)	1000	2000	3000	4000	5000	6000	7000	8000	9000
Series M	Flow (m ³ /hr)	2.6	5.2	7.8	10.4	13	15.6	18.2	20.8	23.4
	Power (kW)	0.89	1.78	2.67	3.56	4.45	5.34	6.23	7.12	8.01
	Solenoid Valves(Pcs)	64	128	192	256	320	384	448	512	576
	Nozzles(Pcs)	128	256	384	512	640	768	896	1024	1152
	Water Curtain Length(mm)	1000	2000	3000	4000	5000	6000	7000	8000	9000
Series L	Flow(m ³ /hr)	2.8	5.6	8.4	11.2	14	16.8	19.6	22.4	25.2
	Power(kW)	1.11	2.23	3.34	4.46	5.57	6.69	7.8	8.92	10
	Solenoid Valves(Pcs)	80	168	248	328	416	496	576	664	744
	Nozzles(Pcs)	160	336	496	656	832	992	1152	1328	1488
	Water Curtain Length(mm)	965	2026	2991	3956	5018	5983	6948	8009	8974
Input--water Diameter(DN)		32	50	65	65	80	80	100	100	125
Return--water Diameter(DN)		40	65	80	80	100	100	120	120	125
Light Power(kW)		0.072	0.144	0.216	0.288	0.36	0.432	0.504	0.576	0.648
Net Weight(kg)		90	140	220	300	380	460	540	620	700
Operatig Weight(kg)		165	250	400	540	680	830	970	1110	1260
Equipment Length(mm)		1340	2340	3340	4340	5340	6340	7340	8340	9340

Circle Digital Water Curtain

	Parameters \ Model	Model								
		VeSL-0-2000	VeSL-0-2500	VeSL-0-3000	VeSL-0-3500	VeSL-0-4000	VeSL-0-4500	VeSL-0-5000	VeSL-0-5500	VeSL-0-6000
Series S	Flow(m ³ /hr)	15.07	18.84	22.6	26.37	30.14	33.91	37.68	41.44	45.21
	Power(kW)	4.32	5.4	6.49	7.57	8.65	9.74	10.82	11.9	12.99
	Solenoid Valves(Pcs)	251	314	337	440	502	565	628	691	754
	Nozzles(Pcs)	502	628	674	880	1004	1130	1256	1382	1508
	Water Curtain Perimeter(mm)	6275	7850	8425	11000	12550	14125	15700	17275	18850
Series M	Flow(m ³ /hr)	16.32	20.41	24.49	28.57	32.65	36.73	40.82	44.9	48.98
	Power(kW)	5.57	6.98	8.37	9.77	11.16	12.57	13.96	15.36	16.75
	Solenoid Valves(Pcs)	400	504	600	704	800	904	1008	1104	1208
	Nozzles(Pcs)	800	1008	1200	1408	1600	1808	2016	2208	2416
	Water Curtain Primer(mm)	6250	7875	9375	11000	12500	14125	15750	17250	18875
Series L	Flow (m ³ /hr)	17.58	21.98	26.37	30.77	35.16	39.56	43.96	48.35	52.75
	Power(kW)	6.99	8.74	10.49	12.25	13.99	15.74	17.5	19.25	20.99
	Solenoid Valves(Pcs)	520	648	784	912	1040	1168	1304	1432	1560
	Nozzles(Pcs)	1040	1296	1568	1824	2080	2336	2608	2864	3120
	Water Curtain Primer(mm)	6272	7816	9457	11001	12545	14089	15729	17273	18817
Input--water Diameter(DN)		125	125	125	150	150	150	100*2	100*2	125*2
Return--water Diameter(DN)		125	125	125	150	150	150	100*2	100*2	125*2
Light Power(kW)		0.452	0.565	0.678	0.791	0.904	1.017	1.13	1.243	1.356
Net Weight(kg)		500	630	750	880	1000	1130	1260	1380	1500
Operatig Weight(kg)		900	1130	1350	1580	1800	2030	2270	2480	2700
Equipment Diameter(mm)		2320	2820	3320	3820	4320	4820	5320	5820	6320



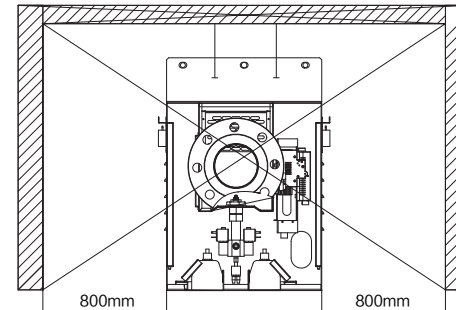
Equipment Installation Requirements

- Sufficient space shall be reserved surround the equipment to accommodate daily operation and maintenance.
- The best visual effect of the Waterfall is about 3M.
- Return pipe is based on gravity reflow principle, so the installation of return pipe should follow the high to low reflow principle.
- The system needs to install a reliable paper core filter. If it is impossible to filter microorganisms, it can be properly put some medicine.
- When the project cannot achieve gravity reflow, the constant water supply mode can be customized. Then we only need the water supply pipe, no need for a return pipe.
- For outdoor, it can work well when the wind power is no more than level 3.



Water Collecting Pool

Material Requirement	Concrete, Stainless Steel Or Other Materials		
Height of Water Curtain	Width Of Water Collecting Pool	Length Of Water Collecting Pool	Depth Of Water Collecting Pool
≤3m	1m	Length Of Water Curtain +1.0m	0.5m
≤4m	1.2m	Length Of Water Curtain +1.2m	0.5m
≤5m	1.4m	Length Of Water Curtain +1.4m	0.6m
≤6m	1.6m	Length Of Water Curtain +1.8m	0.6m
≤7m	1.8m	Length Of Water Curtain +1.8m	0.6m
≤8m	2m	Length Of Water Curtain + 2.0m	0.6m



Standard Maintenance Space

Insufficient Maintenance Space

