



E-Tech Technology (Shenzhen) Ltd

Tel:86-755-8364 6618
Fax:86-755-8364 6518
Web:www.e-techwater.com
Email: sales@e-techwater.com

Create Smart Lives



E-Tech Technology (Shenzhen) Limited established in 2004, formerly by the name of E-Tech Heat Pumps (Shenzhen) Limited, which originated from Hong Kong, the leading and diversifying supplier of heat pumps, DC 24V submersible pumps, water treatment products and interactive water features products.

With more than three decades of experience and hard-working, we have achieved not only innovative concepts in design, but also unique products in manufacture. So far, we have obtained several national patents, international PCTs, national computer software copyrights and other qualifications. As a market leader, E-Tech was entrusted by the "Ministry of Housing and Urban-Rural Development of the People's Republic of China" to be responsible for editor-in-chief of the industry standard "Swimming Pool Damp-Removal Heat Recovery Heat Pump". In 2018, E-Tech became a national high-tech enterprise officially.

As one of the leaders of the water technology product in China, by our full experiences in product application, our water products are well spread throughout China, north to Manzhouli & south to Sanya, west to Xinjiang & east to Taiwan. We have provided services for well-known hotels and developers, such as Marriott, Hilton, Shangri-La, Wanda, Poly, Greenland, OCT, Country Garden, Evergrande etc. In order to keep our lead in technology, we frequently invite overseas professionals in water fields to communicate the new technology as a strategic plan. Our branches in Beijing, Shanghai, Chengdu, and Xiamen provide excellent professional technology support in time.

"Focusing on water, growing on water", E-Tech will always concentrate on the research and development of diversified water technology products, to provide the market with more water-oriented energy saving and interactive products.



Patent for Invention

Submersible pump system and submersible pump (Serial Number: ZL 2016 8 0007600.8)

The equipment and method of interaction minesweeping game (Serial Number: ZL 2016 8 0007530.6)

A system and method of bubble tracking, recognition and shooting (Serial Number: ZL 2016 8 000 7596.5)

Patent for Utility Models

Submersible pump (Serial Number: ZL 2019 2 0096975.7)

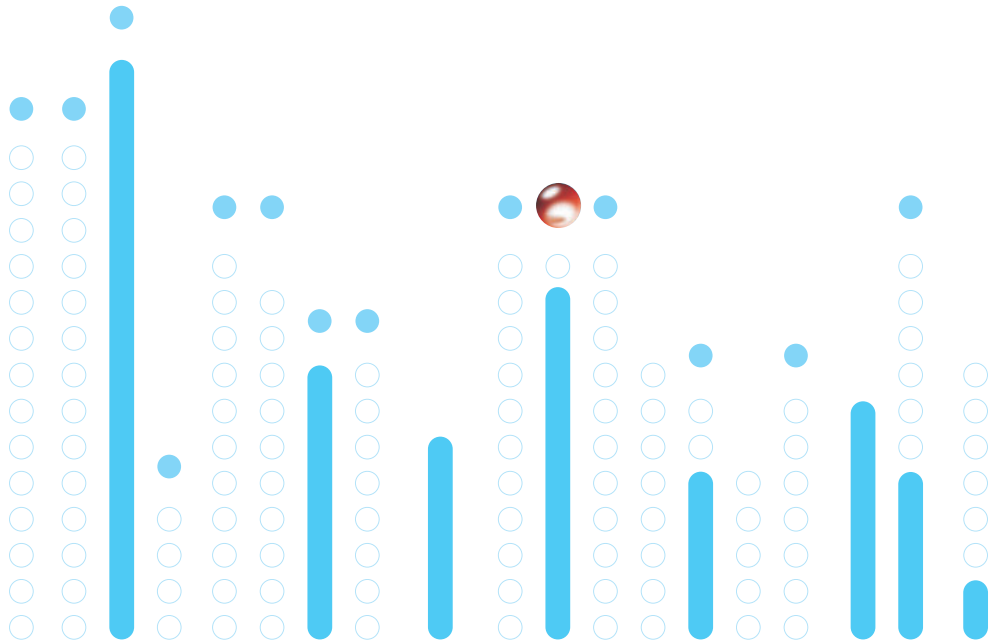
A safe integration flow filter device (Serial Number: ZL 2017 2 1172129.6)

A new type of digital water curtain with interaction and entertainment function (Serial Number: ZL 2016 2 0440993.9)

Design Patent

Waterfall swing (Serial Number: ZL 2018 3 0708656.8)

Water Features Products





Dry Fountain Swing Nozzle

Dry Fountain Swing Nozzle is an all-in-one product. It can be installed on dry fountains and other landscapes. Compared with traditional nozzle, the changing speed of water column is more variable. The modular marble tiles(600mmx600mm) can be installed as a platform on top of universal supports. when a show ends, the fountain holes will be shut off automatically. This designated function effectively prevents foreign objects being trapped and provides more aesthetic appealing and safety.

Features

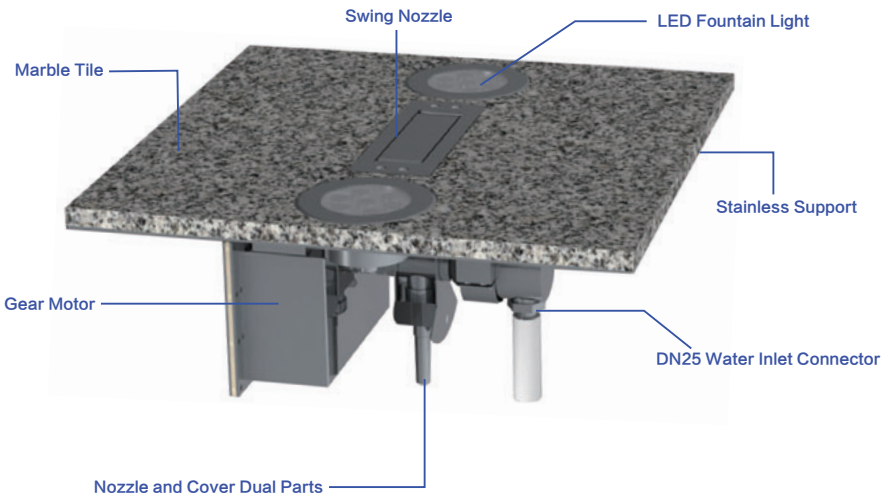
- IP67 Waterproof Grade
- Max Swing Speed 120° /s
- DMX512 Standard Protocol
- DC 24V Low Voltage Power Supply, More Safety
- 2 sets of DMX512-RGB-6W LED Fountain Lights
- Combined With Different Models Of E-Tech Low Voltage Submersible Pump
- The Automatically Shut-off Fountain Holes Provide More Aesthetic Appealing And Safety.



Scan code to watch video



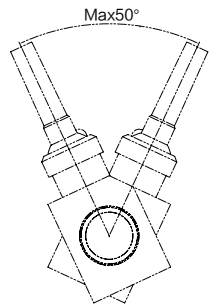
Product Structure Schematic Diagram



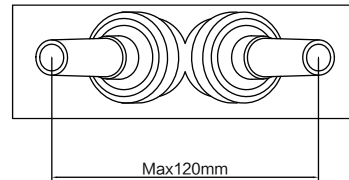
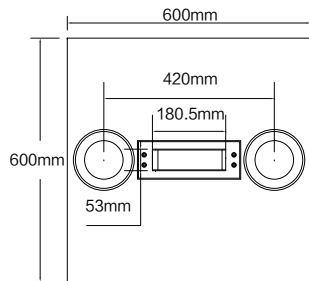
Product Parameters

Dimension	600x600x300 (mm)
Working Temperature	3~36℃
Working Power Supply	DC24V~60W
Material	SS304
Waterproof Grade	IP67
Motor Power	48W
LED Fountain Light	2xRGB-6W Lights
Angle Variation Range	50°
Max Swing Speed	120° /s
Nozzle's Diameter	12mm
DMX Signal Channel	Gear motor: 2 Signal channels
	LED light: 3 Signal channels x2 Lights
Submersible Pump	All E-Tech Models For Optional
Marble Tile	Not Included, Purchasing Separately

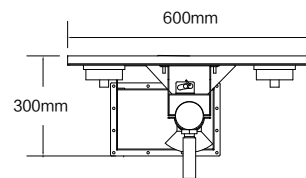
Product Dimension



Nozzle's Angle Variation Range

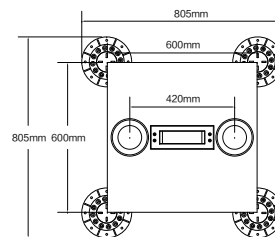
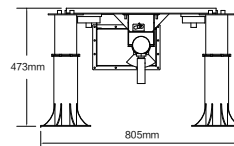


Nozzle's Swing Length Range Top View



Installation

Installation Schematic Diagram



Dry Fountain Module

Dry Fountain Module is a performance product that integrated lighting, music and fountain. It can be modularized, and installed on squares, dry fountains and other outdoor sites, where landscape is required. The surface of dry fountain module is made by frosted tempered glass, with built-in floor lights and fountain lights (optional), combined with E-Tech DC24V submersible pump, the floor lighting and multi-dimensional water show can be performed. The dancing fountain module can be applied to dry fountains, water parks, theme parks, municipal squares and shopping malls.



Features

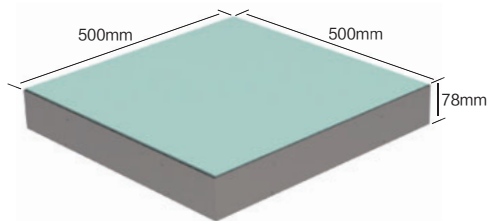
- SS304
- Frosted Tempered Glass
- IP67 Waterproof Grade
- DMX512 Standard Protocol



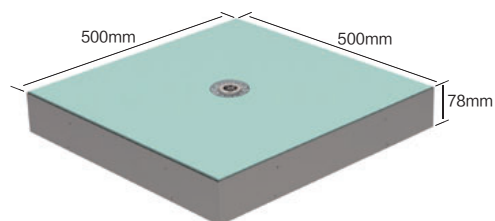
Scan code to watch video



VeB-500-N



VeB-500-P

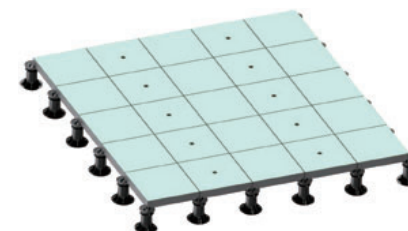


Product Parameters

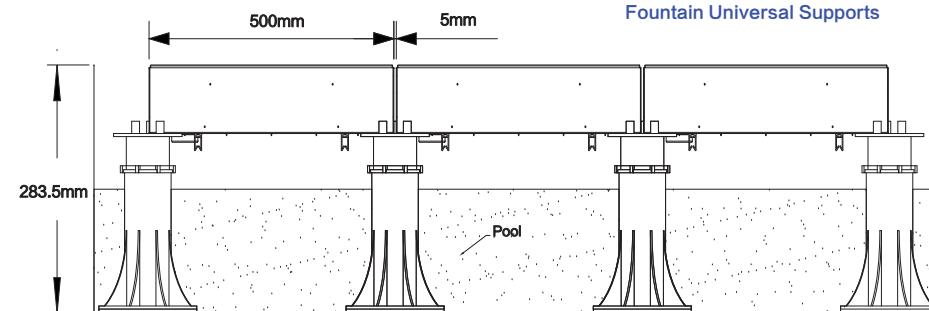
Model	VeB-500-N	VeB-500-P
Working Ambient Temperature	3~40℃	3~40℃
Waterproof Grade	IP67	IP67
Material	SS304 & Frosted Tempered Glass	SS304 & Frosted Tempered Glass
Nominal Voltage	DC24V ± 2V	DC24V ± 2V
Power(No Light)	30W	42W
Floor Light	33W-RGB-DMX512	33W-RGB-DMX512
Circle Fountain Light	N/A	12W-RGB-DMX512
DMX Signal Channel	3 (Floor Light)	6 (Floor Light-3, Circle Fountain Light-3)
Bearing Weight	300kg	300kg
DC24V Submersible Pump	N/A	Optional
Net Weight	18kg	18kg
Dimension	500mmx500mmx78mm	500mmx500mmx78mm

Note: More than 200 Pcs, the size of dry fountain module can be customized.

Installation Requirements



Fountain Universal Supports



Making four legs of the dry fountain module on the fountain universal supports, keep stable and without wobbling.

DMX512 Signal cable connecting



VeB-500-N, The quantity of dry fountain module to connect with each signal branch shall less than 20 connectors.



VeB-500-P, The quantity of dry fountain module to connect with each signal branch shall less than 10 connectors.

